

Kitchen Guard Suppression

Technical Sheet

Designed for Studio, Open Plan and Student Apartment's to reduce the kitchen hob risk and activate sounders throughout the apartment, thus allowing relaxation on the hob position and restrictions on the apartment size under BS9991:2015.

MANAGING THE RISK .

Incorporating 'Hob Guard' or 'Hob Detection' to monitor and control the hob locally. On activation, intelligent apartment ceiling detectors sound throughout the apartment. This results in the hob suppression system activating and isolation of the electrical power to the hob to prevent a fire reoccurring.

Hob Guard works by means of four sensors which monitor's the hob constantly, raising a pre warning 15 second alarm. Where no action is taken or conditions deteriorate it will then isolate the power to the hob, activate the suppression system and activates the apartment sounders.

Hob Guard comes from Norway where the Building Regulations require all kitchen hobs to be fitted with a monitoring Hob Guard in accordance with EN50615:2015 'Hob Fire Prevention Standard', resulting in reduced numbers of cooking incidents since its introduction.

Hob Detection for basic installations releases the suppressant on activation of the hob detector, isolates the electrical power to the hob and activates the apartment sounders.



The system gives local hob detection, over that of the ceiling mounted heat detector which takes longer to register, thus improving detection times and getting the occupants moving earlier.

The Kitchen Guard Suppression concept was designed for Studio and Open Plan Apartments where the 'Cooking Appliances' opens to the living space giving Fire Engineers a tool to assist in presenting a case for designing the risk areas out and achieving greater flexibility with the open plan apartment area.

The extinguishing unit can be located up to 2m from the extractor hood which needs to be fitted with the gas manifold and detector. The system covers up to 4 electrical rings.

The Kitchen Guard Suppression system prevents accidents by first setting off an alarm and then shutting down the cooker, in case the power has accidentally been left on.

What's more, the Kitchen Guard Suppression system can also put out a fire that has already started on the cooker - even a fire from burning fat.



Features

Cost effective kitchen hob suppression system.

The extinguishing agent is designed to fight fat fires.

Isolates power supply to hob, extinguishes fire and raises the alarm.

Discharge nozzle & detection fitted within extractor hood.

Allows kitchen to be part of the open plan in LD1 & sprinklered apartments exceeding 32m² in area as restricted by BS9991:2015.

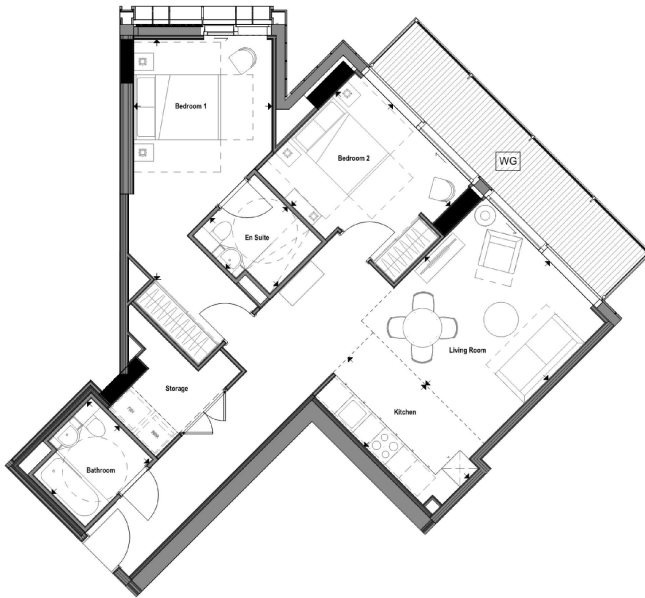
Specification

230v, 3 amp un-switched fuse spur adjacent to extinguishing unit.

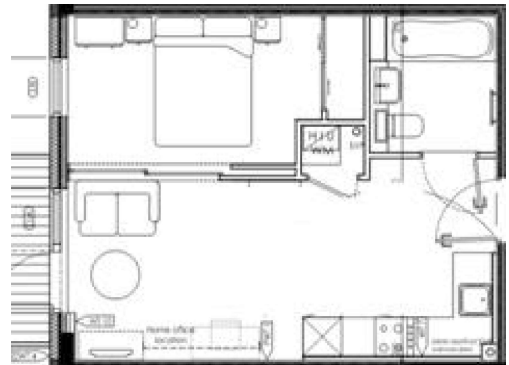
Power supply to hob to be run through contactor.

Extinguishing unit 180mmW x 200mmD x 500mmH.

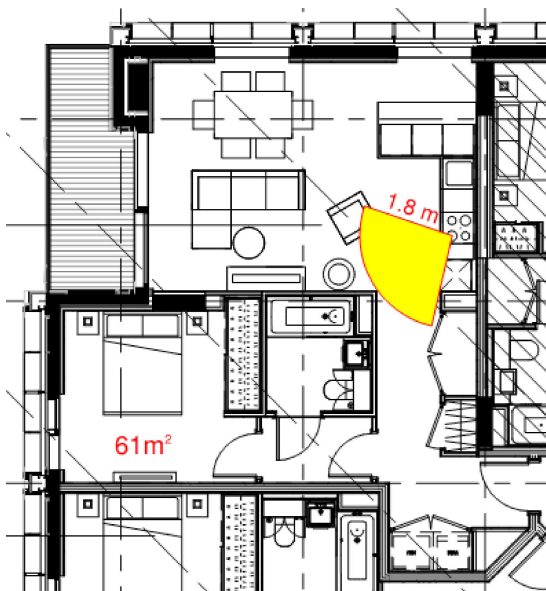
Cooker contactor unit 239mm x 113mm x 42mm.



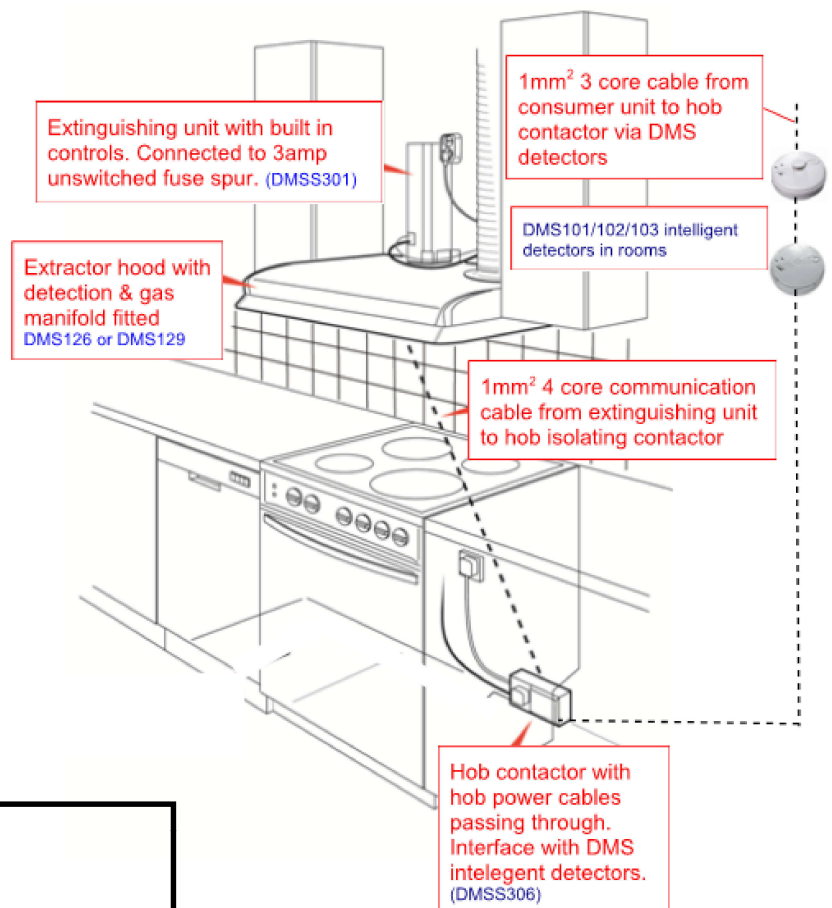
181m² Sprinklered/LD1 'Kitchen Guard Suppression'
Open Plan Apartment



37m² LD1 'Kitchen Guard Suppression'
Studio Apartment



61m² Sprinklered/LD1 'Kitchen Guard Suppression' Apartment



Stock Codes

- DMS126 : 26 amp hob guard unit or
- DMS129 : Hob detection unit
- DMSS306 : Suppression system
- DMSS306 : Hob contactor
- DMS101 : Ionisation intelligent smoke detector (alkaline)
- DMS102 : Optical intelligent smoke detector (alkaline)
- DMS103 : Intelligent heat detector (alkaline)