

Hygienic Door Opener

The 'Hygienic Door Opener' allows people to open doors with the simple use of their foot. This removes the need to touch door handles reducing the spread of germs/ viruses and cross-contamination from the door handle. The Opener works on latched and latch free doors.

Building Managers invest in PIR operated, lights, taps and dryers in public bathrooms to minimise germ spread, and yet people are expected to open the bathroom door with their hands which makes this investment useless. This allows the spread of modern day viruses and germs.

Hygienic Door Opener offers a low cost and effective way to ensure the door can be opened after spending time washing hands, regardless what other people do.

The Hygienic Door Opener mounts to the bottom of the door and is operated by stepping on the ridged edge of the opener and pulling your foot back, allowing you to walk through the door opening without touching the door handle. It's that simple.

This is a really easy way to provide an able bodied person with a second hands free hygienic option for opening a door so that they do not have to touch the door opener with their hands.

The hygienic, handsfree door opener makes you feel relaxed knowing that you, your employees, and customers don't need to touch doors. The sanitary door handle helps minimise spreading germs through cross-contamination.

The cleanliness of door handles is an important issue; not just in public toilets, but in hospitals, surgeries, offices, restaurants, hotels, clubs and all types of doors in public or shared buildings.

Hygiene Facts

- 7% of women and 15% of men do not wash their hands after using the bathroom.
- 33% of people don't use soap when washing their hands.
- 80% of people only wash their hands for 6 seconds. (min recommended 20 seconds).
- Up to 80% of communicable diseases are transferred by touch.
- Failing to wash hands correctly contributes to nearly 50% of all foodborne illness outbreaks.
- Approximately 39% of people don't wash their hands after, sneezing or coughing.

And this allows the transmission of germs/viruses from the contaminated door handle to your hand.



Benefits

- Easy, hand free use for opening the door.
- Works with latched and latch free doors.
- Help prevent the spread of infection.
- Allows items to be carried in both hands.
- Low cost.
- Easily installed.
- Works with wood or steel doors.



Latch Free Door Opener (HD01)



Latched Door Opener (HLD01)

Hygienic Latch Free Door Opener

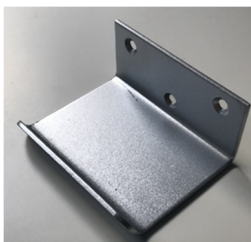
The 'Hygienic Latch Free Door Opener' allows people to open doors with the simple use of their foot.

The Hygienic Door Opener mounts to the bottom of the door and is operated by stepping on the ridged edge of the Opener and pulling your foot back, allowing you to walk through the door opening without touching the door handle. It's that simple.



Specifications

- The opener fits to the bottom of the door.
- Unit dimensions 100 x 78 x 44mm high. Weight 0.3kg.
- Kit includes 3 fixing screws, 1 cabinet connection bolt, 1 door opener, door label instructions and fixing instructions.
- 3mm thick mild steel, zink coated, Regal Silver finish.



Hygienic Latch Free Door Opener. **Model ref HDO1**

Hygienic Latch Door Opener

The 'Hygienic Latch Door Opener' allows people to open doors with the simple use of their foot.

The Hygienic Door Opener mounts to the bottom of the door on both sides. Is operated by stepping on the ridged edge of the Opener, pushing down and pulling your foot back, allowing you to walk through the door opening without touching the door handle. To walk in the opposite direction you simply push the step down and away from you. It's that simple.



Specifications

- The opener fits to the bottom of the door and connects to the door handle.
- Unit dimensions 80 x 80 x 150mm high. Weight 0.5kg.
- Kit Includes 4 fixing screws, 2 door openers, 2 door label instructions and fitting instructions.
- 3mm thick inner bracket, 1.5mm thick outer bracket, mild steel, zink coated, Regal Silver finish.



Hygienic Latch Free Door Opener. **Model ref HLDO1**